



THE STATE BAR OF CALIFORNIA

88TH ANNUAL MEETING

OCTOBER 8–11, 2015 | ANAHEIM

PREVIEW



THE STATE BAR OF CALIFORNIA

88th ANNUAL MEETING

October 8–11, 2015 | Anaheim

The State Bar of California returns to sunny Anaheim for the 2015 Annual Meeting. The Annual Meeting is a multi-day showcase of continuing legal education courses, celebrity speakers, and noted legal scholars. Each day gives you several choices of courses and special events, all of which are summarized in this **Preview**.

The Annual Meeting registration fee is structured to make it more affordable to attend. You can select either a Full Meeting Pass or a 2-Day Pass. Special fees are available for Young Lawyers and New Admittees. September 14 is the deadline for the lowest fee.

Your pre-registration includes:

- Choice of 126 MCLE courses
- Up to 20 Hours of MCLE and Legal Specialization credit
- General Session with Celebrity Speakers
- Free Networking Lunch in the Exhibit Hall (with early RSVP)
- Exhibition Show with giveaways, morning coffee, and evening happy hours
- Social events hosted by the State Bar and its various Sections, local bar associations, and law school alumni groups
- Opportunity to purchase advance tickets for the State Bar Breakfast, Bench and Bar Luncheon, CWL Annual Dinner, and the first outdoor President's Festival.
- A fun place to bring your family and meet your friends—a playground for all!

Thursday, October 8 | 10:00 am–11:00 am |
Seating is Limited | Session #1 | 1 Hour MCLE

Opening Session

“Super Google and Beyond: Conducting Legal and Investigative Research”

There's so much more to Google than the simple search box on the home page...if you know where to look. At the 2015 Annual Meeting opening session, **Carole Levitt** and **Mark E. Rosch**, authors of *Google for Lawyers* and *The Cybersleuth's Guide to the Internet*, will reveal hidden Google search features, secrets, and shortcuts so you can quickly conduct legal and investigative research for all your client matters. They will also take you beyond Google to show you how to search anonymously and how to recover web pages that have disappeared (or been altered) that you need as evidence.

Featuring: Carole Levitt, J.D., M.L.S., and Mark E. Rosch



Carole Levitt



Mark E. Rosch

INSIDE

Annual Meeting Luncheons/
Special Events4

Education Programs
Partners6

Education Program
Descriptions 10

Registration and General
Information 24

Pre-Registration Form
and Course Selector 26



Thursday, October 8 | 11:15 am – 12:30 pm | Seating is Limited | Session # 2 | 1 Hour Elimination of Bias

General Session and Presentation of the Spirit of CEB Awards

Co-Sponsored by Continuing Education of the Bar (CEB)

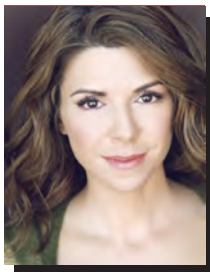
Join us at our annual *General Session* which begins with the presentation of the **2015 Spirit of CEB Awards** to recognize California attorneys who have given their time and expertise to the legal profession through their teaching and writing for CEB. Next, Professor Kathleen A. Tarr will lead an entertaining dialogue on the legal community's response to the biases within the entertainment industry.

“Delights, Diversions, and Discriminations: The Bias and Business of Show Business”

“White, male, 20s.” If included in most job descriptions, we would immediately denounce this language as illegal. What is it about the entertainment industry that stops most of us from batting an eye? Some popular television shows running for multiple seasons have never hired female directors or directors of color. As television writers age, their employment opportunities diminish. Geena Davis remarked in a recent NPR interview, “[I]f we add female characters at the rate we have been for the past 20 years, we will achieve parity in 700 years.” So why isn't the legal community more vocal about these discriminations? Join us as we examine bias and its perpetuation by the entertainment industry as well as the role of law and the courts. Presented by **Kathleen A. Tarr** with celebrity guests **Amy Pietz** and **Edward James Olmos**.



KATHLEEN A. TARR - A University of California, Berkeley and Harvard Law School graduate and former Skadden Fellow, Kathleen has also built a professional career in the entertainment industry, acting for the last 15 years in films and commercials and on television and stage. She is the author of numerous publications from creative non-fiction to law review including “Above and Beyond: Veterans Disabled By Military Service” which was cited by the United States Court of Appeals for the Ninth Circuit. A filmmaker as well, Kathleen's documentary “Getting Played: who's playing you?!” received Honorable Mention in the 2010 International Black Women's Film Festival. Kathleen currently lectures in the Program in Writing and Rhetoric at Stanford University.



AMY PIETZ - Originally trained as a ballet dancer but later discovered her passion for acting. She made her acting debut on the TV series *Highlander* and then became more familiar to TV viewers for her role on *Caroline in the City*, for which she received a SAG Award Nomination for Best Actress in a Comedy. Amy has appeared in more than 300 episodes of television, including regular roles on *The Nine Lives of Chloe King* and *Aliens in America*, and has had guest starring roles on *How to Get Away with Murder*, *Bones*, and *Law and Order SVU*. She also has an extensive stage career, appearing in several productions in Los Angeles, Chicago and Broadway. Amy received a degree in acting from DePaul University's Theatre School. She plans to climb Mount Kilimanjaro in 2017, and is currently writing a book chronicling her life as an adoptee and birth mother.



EDWARD JAMES OLMOS - Known as the “Olivier of the Latino world,” Edward James Olmos is a multi-talented actor, producer, director, and community activist. He was born and raised in East Los Angeles, and spent many years in theatrical roles until his performance in the musical play *Zoot Suit*, which led to a Tony Award nomination. He went on to star in such films as *Wolfen*, *Blade Runner*, *Selena* and *12 Angry Men*, and on the television series *Battlestar Galactica*. He was honored with a Golden Globe Award and an Emmy nomination for his work in HBO's *The Burning Season*, received an Oscar nomination for his portrayal of Jaime Escalante in *Stand and Deliver*, and won an Emmy Award and a Golden Globe Award for his role on the television series *Miami Vice*. Olmos also makes time to participate in many humanitarian efforts. He is a US Goodwill Ambassador for UNICEF, and a national spokesperson for the Juvenile Diabetes Foundation.

Annual Meeting Luncheons and **SPECIAL EVENTS**

Ticketed events may sell-out before the meeting, so sign up early. Events and speakers are subject to change.

Thursday, October 8 | 12:30 pm–1:45 pm | Complimentary. RSVP Required | Event # 127

Networking Luncheon in the Exhibit Hall

Gather with your colleagues and meet with vendors who will show you the latest and greatest equipment, products, services, and yes, even accessories. There are no classes scheduled during this time, so grab a quick bite to eat so you can shop the exhibit floor. *Pre-register for this activity to receive your ticket for the complimentary lunch (provided to registered attendees only).*

Thursday, October 8 | 5:30 pm–6:30 pm | Complimentary

Happy Hour in the Exhibit Hall

The last class is over and a casual ‘happy hour’ awaits you in the Exhibit Hall. This activity features a wine tasting hosted by **Theopolis Vineyards**, a small lot vineyard and hand-crafted winery located in California’s prestigious Yorkville Highlands of the Anderson Valley. Check the Exhibitor board for the location of the happy hour hot spots.

Thursday, October 8 | 5:30 pm–9:30 pm | \$140 pp | Event # 128

The California Women Lawyers Association 41st Annual Dinner and Silent Auction

Join the California Women Lawyers (CWL) at its 41st Annual Dinner, with keynote speaker **Amy Weaver, General Counsel of Salesforce, Inc.** who will reflect on her professional career and her leadership at Salesforce, Inc., an innovative global provider of enterprise cloud computing services. We hope you will join California Women Lawyers at their Annual Dinner celebrating 41 years of advancement for women, as well as the extraordinary career and contributions of Ms. Weaver. A ticket is required to attend the reception/silent auction and dinner. Tickets may also be purchased directly from CWL at www.cwl.org.

Friday, October 9 | 5:00pm–6:00pm | Complimentary

Happy Hour in the Exhibit Hall

Don’t miss our Friday night happy hour in the Exhibit Hall. This is where the fun begins. Light munchies hosted by the **Practising Law Institute**.

Friday, October 9 | 6:30 pm–10:00 pm | Adults \$45 pp | Event # 129 | Children 12 and under free | Event # 130

President’s Festival

Get ready for a celebration just steps away from the hotel. We are staging an adventure outdoors for the kid in all of us. We’ll have music and dancing, action games, gourmet foodie trucks, and more fun surprises. **St. Francis Vineyards** will be on hand to feature its award winning wine at an informal tasting, and perhaps a visitor from a nearby park will be there to greet you. Your all inclusive pass (which includes drinks and food) is \$45 per person. The truly young—anyone under 12 years of age—is free.



President’s Festival—Food Trucks

Saturday, October 10 | 7:30 am – 9:00 am | \$35 pp |
Event # 131

The State Bar Breakfast

Co-Sponsored by The State Bar of California Business Law Section

“Cybersecurity Challenges and Issues for Business Lawyers and Their Clients”

In his speech, keynote speaker **Juval Aviv, President & CEO, Interfor, Inc.** will discuss cyber security threats faced by government entities and the private sector, where these threats are emanating and what is happening to organizations that have fallen victim to recent attacks. Hear about the increasing need for cyber security protections, challenges facing law firms and their clients, and recommendations for security measures that law firms can take to protect themselves and their clients.

Saturday, October 10 | 10:45 am – 12:00 pm |
Complimentary

Annual Swearing in Ceremony of the State Bar of California Board of Trustees and the California Judges Association Board of Directors

Join us at this year's Swearing-in Ceremony. California Supreme Court Chief Justice **Tani Cantil-Sakauye** will administer the oath of office to the President and incoming members of the State Bar of California Board of Trustees and The California Judges Association Board of Directors. Featuring the annual remarks of the Chief Justice and organization's Presidents.

Saturday, October 10 | 12:15 pm – 1:45 pm |
\$49 pp | Event # 132

The State Bar Luncheon and Alexander F. Morrison Address

“Judging Lehman: Lessons Learned From the Lehman Brothers Bankruptcy”

Keynote speaker **Honorable James M. Peck** is a respected former Bankruptcy Judge in the Southern District of New York who presided over the Lehman Brothers bankruptcy. He will share his personal experience with this calamitous collapse, assess how our judicial system performed during the financial crisis, and offer “lessons learned”—including how courts can deal effectively with extremely complex financial matters of global import when time truly is of the essence.

www.calbar.ca.gov/annualmeeting

ABOUT THE KEYNOTE SPEAKERS



AMY WEAVER is General Counsel of Salesforce, Inc. where she advises the Board and manages its worldwide legal affairs. Amy is among the California Diversity Council's Top 50 Most Powerful Women in Technology for 2015, an honor reserved for those who not only achieve personal success but who also make it possible for others to more easily follow in their footsteps. She previously managed

global legal and corporate affairs for Univar Inc., as their General Counsel, and served as Deputy General Counsel for Expedia, Inc. Ms. Weaver also clerked for the Honorable Eugene A. Wright, United States Ninth Circuit Court of Appeals, and worked in private practice at Perkins Coie, LLP, and Cravath, Swaine & Moore. She is a Harvard Law School graduate, and a Wellesley College alumna.



JUVAL AVIV is Chairman and CEO of Interfor International. Mr. Aviv is a leading expert on terrorism and white collar crime and fraud. He led an elite Commando/Intelligence Unit in the Israel Defense Force, and participated in intelligence and special operations for the Israeli Secret Service. An account of one his missions became the basis of Steven

Spielberg's film Munich. As head of Interfor, Mr. Aviv conducts international investigations into white-collar crime, and has solved numerous cases of fraud, counterfeiting, embezzlement, anti-competitive behavior and violations of the Foreign Corrupt Practices Act. He has spoken for many organizations, including the FBI, US Department of Justice, Smith Barney and the American Bankers Association. Mr. Aviv has served as a consultant on counterterrorism for the Fox News Channel, and has been featured in numerous articles in major magazines and newspapers worldwide.



HON. JAMES M. PECK is global co-chair of Morrison & Foerster's Business Restructuring & Insolvency Group and is based in the firm's New York office. He served as a U.S. Bankruptcy Judge for the Southern District of New York from 2006 to 2014 and presided over the chapter 11 and SIPA cases of Lehman Brothers and its affiliates, constituting the

largest bankruptcy filing in U.S. history. Judge Peck also brokered settlements in a number of high-profile cases including American Airlines and General Motors. He is a frequent speaker on insolvency issues, and has participated in conferences across the globe. Before his appointment, Judge Peck was in private practice for more than 35 years, concentrating for much of that time on bankruptcy law, business reorganization, and creditors' rights.

Annual Meeting Program

PARTNERS

Access to Justice Commission – AJC

- 22 Introducing Social Media into Evidence
- 33 Limited Scope Representation in Bankruptcy and Consumer Law

Antitrust & Unfair Competition Section – AN

- 58 Antitrust, Privacy and Unfair Competition Law 101
- 69 Risky Business: Privacy Law in the Digital Age
- 80 Insights from the Battlefield: Advanced Trial and Class Action Practice

Business Law Section – BLS

- 3 Ethical Issues and Pitfalls for Non-Profit Boards and their Advisors
- 14 Basic Legal Skills Necessary for Advising Clients Doing Business Online
- 15 Recent Developments in Federal and California Securities Laws
- 25 When Deals Go Bad: Drafting Contracts with Litigation in Mind
- 36 Bankruptcy Appellate Practice
- 37 Debt Collection In The Age Of Technology And The CFPB
- 47 Practical Tips for Negotiating Commercial Leases for Franchise Locations
- 81 Ninth Circuit & Supreme Court Bankruptcy Year in Review

California Young Lawyers Association – CYLA

- 16 California Language Access Plan: Language Barriers Preventing Access to Justice
- 59 Review of Federal Discovery Obligations for Prosecutors
- 70 Blurred Lines Between Social Media and Attorney Advertising: Connecting Ethically
- 102 Recent Developments in Privacy and Data Security Law
- 113 Litigating Private Attorney General Act Claims in the Aftermath of Supreme Court Decisions

Committee on Alternative Dispute Resolution – CADR

- 4 Strict Mediation Confidentiality? Not So Fast!
- 38 Tackling Emotion in Mediation: Tips for Dealing with People in Conflict
- 82 Improve your Mediation Skills
- 91 Get the Most Out of Mediation: Prepare for and Use Mediation Effectively
- 103 Arbitration 2015: The Biggest Issues in Arbitration Today

Committee on Appellate Courts – CAC

- 5 It's All About The Record: Protecting And Presenting The Record On Appeal
- 60 Appeals: That's Not How We Do It In This Court
- 71 Petitions for Review in the California Supreme Court
- 104 Appeals: Write Right . . . Brief Brief Writing
- 120 Advanced Civil and Criminal Writ Practice in the California Court of Appeal

Committee on Federal Courts – CFC

- 83 Access Issues in Federal Court: Language, Indigency, and Elimination of Bias

Committee on Group Insurance Program – COGIP

- 6 Finding Coverage: Practical Tips on Locating Insurance for Your Practice
- 26 Is the Lid Off? Crafting an Effective Insurance Policy Limit
- 61 2015 Update on Healthcare Reform
- 114 Insurance 101: Key Concepts of Insurance
- 121 Cyber Principles for Attorneys

Committee on Mandatory Fee Arbitration – CMFA

- 17 Navigating Minefields in Fee Disputes: It's Not Just About Fees!
- 27 Avoid the Void: Considerations in Billing Your Law Firm's Clients
- 48 Tricky Billing Issues: It's Not Easy Making Green in a Busy Law Firm
- 62 Top Ten Things that Put Lawyers in Hot Water

Committee on Professional Liability Insurance – COPLI

- 7 A National Survey of Social Media Issues Impacting Lawyers: More Problems on the Horizon Here?
- 63 Sometimes It Takes Just One: Know Where Your Insurance Policy Takes You If A Claim Is Made
- 72 Client Threatening to Sue: Best Practices for Mitigating Your Exposure
- 84 Communications with/Concerning Dissatisfied Clients: Rules of Confidentiality and Privilege?
- 92 The Past Year in Review: Recent Developments in the Law of Lawyering

Committee on Professional Responsibility and Conduct – COPRAC

- 28 Ethics Update 2015: Significant Developments in the Law of Lawyering
- 39 Dealing with Difficult Clients in Your Law Practice
- 64 Ethics for the Solo and Small Firm Lawyer
- 85 Ethics of Getting Your Legal Fees Paid

Continuing Education of the Bar – CEB

- 108 Using Judicial Council Forms Correctly in a Probate Proceeding

Council on Access & Fairness – COAF

- 49 Walk the Walk: Identifying and Eliminating Bias in the Workplace
- 93 Achieving Diversity in Higher Education and the Legal Profession
- 115 Addressing the Needs of Persons with Disabilities in the Criminal Justice System

Criminal Law Section – CRIM

- 9 50 Shades of “Brady”: DA Discovery Obligations and Sanctions for Violations
- 29 Elimination of Bias in Jury Selection: Wheeler/Batson/Lenix in the Courtroom
- 50 Courtroom Etiquette: Dos and Don’ts from the Judicial Perspective
- 65 Ethics for Criminal Law Attorneys
- 94 Kids Kaught Up in the Kourtroom: Trends in Juvenile Delinquency and Dependency Practices
- 109 Ethics and Social Media: Cybersleuthing, Predatory Friending and More
- 120 Advanced Civil and Criminal Writ Practice in California Court of Appeal
- 122 In Limine Motions: When Before You Begin Trial

Environmental Law Section – EL

- 40 CEQA Compliance Timing: Judicial Treatment of “Pre-Commitment” Since Save Tara
- 73 Fracking Law 101
- 116 Greenhouse Gases and Climate Change: A Regulatory System Comes of Age

Family Law Section – FL

- 30 The Post-Evidentiary, Pre-Appeal Phase of a Family Law Case
- 51 Recent Developments in Family Law
- 95 When Three is Not A Crowd: Multi-Parent Families
- 105 Domestic Violence in the New Era
- 117 Dealing with Children Who Resist Contact with a Parent

Intellectual Property Section – IP

- 41 Lions, Tigers & Friends: Social Media Case Law Review
- 66 Intellectual Property Law: Patent, Trademarks, Copyrights and Trade Secrets
- 74 Navigating the Process: Best Practices in Clearing, Filing & Managing Trademarks
- 75 Intellectual Property Law: Hot Topics in Data Protection
- 86 Intellectual Property for Non-IP Attorneys: Spotting and Dealing With IP Issues



International Law Section – IL

- 18 Aerospace, Defense and Export Controls: A Regulatory Minefield
- 42 International Law: EB-5 Immigrant Investor Update
- 52 Unaccompanied Minors: An International Law Approach to the Humanitarian Crisis at the U.S. Border
- 76 On-line Sales to EU-Customers Under The 2011 Directive on Consumer Rights
- 106 International Law: Protecting Clients Trademark Rights Worldwide

Labor & Employment Law Section – LL

- 19 Mastering Employment Mediations
- 31 Employment Investigations Basics: Ethics, Bias Avoidance and Interviewing Skills (Part I)
- 43 Employment Investigations Basics: Ethics, Bias Avoidance and Interviewing Skills (Part II)
- 96 The Year In Review: An Overview of Recent Employment Law Cases
- 118 Bullet-Proof Deposition Preparation Techniques for the Plaintiff Employee

Law Practice Management & Technology Section – LPMT

- 20 Competency and Consciousness Through Mindfulness
- 87 Honing Your Client Intake Skills to Avoid Practice Challenges
- 97 How to Find and Use Evidence Among Large E-discovery Projects
- 107 In My Opinion: A Review of the Latest Technology Rules to Protect Attorney & Client Confidentiality
- 123 Management Tools to Create Effective Law Office Employees

Lawyer Assistance Program – LAP

- 8 Competence Issues: Coping with the Unique Challenges of Legal Practice
- 67 Competence Issues: Coping with the Unique Challenges of Legal Practice

Lawyering Skills Program – LSP

- 1 Super Google and Beyond: Conducting Legal and Investigative Research
- 2 Delights, Diversions, and Discriminations: The Bias and Business of Show Business
- 77 You Be The Judge
- 108 Using Judicial Council Forms Correctly in a Probate Proceeding
- 124 Recent Developments in Constitutional Law

Legal Services Trust Fund Program – LSFT

- 10 Understanding Attorney Client Trust Accounts

Litigation Section – LIT

- 11 Examining Opening Statement Strategies for Plaintiffs and Defense Attorneys
- 25 When Deals Go Bad: Drafting Contracts with Litigation in Mind
- 78 Trial Lawyer Hall of Fame Series: Voir Dire
- 88 Trial Lawyer Hall of Fame Series: Closing Argument
- 109 Ethics and Social Media: Cybersleuthing, Predatory Friending and More
- 119 Rule 3-110 and Substance Abuse: A Judicial Perspective
- 120 Advanced Civil and Criminal Writ Practice in the California Court of Appeal

Office of Professional Competence – OPC

- 89 Current Ethical Issues for In-House and Outside Counsel

Public Law Section – PL

- 12 Local Public Entity Employee Discipline, Discharge and Procedure: Avoiding Costly Mistakes
- 53 Public Law: Protecting Your Agency's Employees from Threats and Harassment
- 68 Public Law: Handling Contractor Claims on Public Works Construction Projects
- 98 Overview and Current Developments to Open Meetings Law
- 110 Developments in Public Law and State Bar Ethics
- 124 Recent Developments in Constitutional Law

Real Property Law Section – RP

- 21 Converting Public Housing to Private Ownership Under the HUD Rental Assistance Demonstration Program
- 44 Real Property Law: The Pros and Cons of Using Standard Residential and Commercial Leases
- 47 Practical Tips for Negotiating Commercial Leases for Franchise Locations
- 54 Real Estate/Mortgage Issues: Dodd Frank Act
- 90 10 Things Non-Condemnation Lawyers Should Know About Eminent Domain
- 99 Evolution of Easements in California and the Rise of the Equitable Easement

Solo & Small Firm Section – SOLO

- 13 Legal Issues for California Domestic Violence Shelters and Youth Shelters
- 32 What Do You Mean You're Not My Client?
- 100 Protect Your Online Reputation While Ethically Using Social Media
- 111 Basics and New Developments in Intellectual Property Law
- 125 Stop! I have a Restraining Order – I Still Love You!

Standing Committee on the Delivery of Legal Services – SCDLS

- 22 Introducing Social Media into Evidence
- 33 Limited Scope Representation in Bankruptcy and Consumer Law

State Bar Court – SBC

- 112 The Dark Side: Why Lawyers Do Bad Things – An Encore

Taxation Section – TAX

- 23 Overview of Tax Issues that Arise in Bankruptcy
- 55 Partnership Tax Nuts & Bolts: Common Pitfalls to Avoid When Forming Partnerships and LLCs
- 79 Effective Representation with IRS Tax Collection
- 126 Divorce and Taxes (Death is Less Bothersome)

Trusts and Estates Section – TE

- 24 Medi-Cal Long Term Care: Estate Planning Strategies Under New and Proposed Regulations
- 34 Estate Planning to Avoid Litigation: Strategies to Turn What May Seem Inevitable to Avoidable
- 45 The “Guide to the Rules of Professional Conduct for Estate Planning, Trust and Probate Counsel”
- 56 Understanding the Remedies Available for Financial Elder Abuse
- 101 Recent Developments in Trust and Estates Law

Witkin Legal Institute – WLI

- 124 Recent Developments in Constitutional Law

Workers’ Compensation Section – WCS

- 35 Advanced Neurological Issues in Workers’ Compensation
- 46 Workers’ Compensation Trial Practice: Putting Forth Your Best Case
- 57 Workers’ Compensation Medical Treatment Update



The Mission San Juan Capistrano

DESCRIPTIONS

State Bar Annual Meeting education programs are subject to change. This list represents information available at press time. Programs are listed in numerical order. The abbreviation after the program number is the sponsor code. Consult the Annual Meeting Program Partners list in this brochure for the full sponsor name.

Thursday, October 8 | 10:00 am – 11:00 am

1 **Super Google and Beyond: Conducting Legal and Investigative Research**

There's so much more to Google than the simple search box on the home page...if you know where to look. At the 2015 Annual Meeting opening session, Carole Levitt and Mark Rosch, authors of *Google for Lawyers* and *The Cybersleuth's Guide to the Internet*, will reveal hidden Google search features, secrets, and shortcuts so you can quickly conduct legal and investigative research for all your client matters. They will also take you beyond Google to show you how to search anonymously and how to recover web pages that have disappeared (or been altered) that you need as evidence. **CLE: 1 Hour**

Thursday, October 8 | 11:15 am – 12:30 pm

2 **Delights, Diversions, and Discriminations: The Bias and Business of Show Business**

"White, male, 20s." If included in most job descriptions, we would immediately denounce this language as illegal. What is it about the entertainment industry that stops most of us from batting an eye? Some popular television shows running for multiple seasons have never hired female directors or directors of color. As television writers age, their employment opportunities diminish. Geena Davis remarked in a recent NPR interview, "[I]f we add female characters at the rate we have been for the past 20 years, we will achieve parity in 700 years." So why isn't the legal community more vocal about these discriminations? Join us as we examine bias and its perpetuation by the entertainment industry as well as the role of law and the courts **CLE: 1 Hour of Elimination of Bias**

Thursday, October 8 | 2:00 pm – 3:30 pm

3 **BLS Ethical Issues and Pitfalls for Non-Profit Boards and their Advisors**

This program will cover ethical considerations for non-profit boards especially for practitioners who serve both as a board member and represent the board and/or organization. **CLE: 1.5 Hours of Legal Ethics**

4 **CADR Strict Mediation Confidentiality? Not So Fast!**

This program will provide an overview of California's mediation confidentiality statute and how the courts have interpreted its provision, including the recent case of *Milhouse v. Travelers*. Topics include rampant mediator testimony nationwide and the ongoing California Law Revision Commission study concerning whether there should be exceptions to mediation confidentiality for malpractice, other civil claims, or State Bar disciplinary matters. **CLE: 1.5 Hours; Legal Specialization: Legal Malpractice**

5 **CAC It's All About The Record: Protecting And Presenting The Record On Appeal**

Panelists will discuss how to protect and present the appellate record. Topics will include what to look out for in the trial court, how to get everything before the appellate court, what to do when things go wrong, and what ethical issues are involved in presenting the record. **CLE: 1.5 Hours of Which .5 Hour Applies to Legal Ethics; Legal Specialization: Appellate Law**

6 **COGIP Finding Coverage: Practical Tips on Locating Insurance for Your Practice**

Insurance either funds or is involved in two-thirds of all civil litigation. This program will review strategies and methods of uncovering insurance policies which can be applied in every litigators practice. Presentation will address hypothetical situations where both first party and third party coverage's are commonly overlooked by both plaintiff and defense counsel. **CLE: 1.5 Hours; Legal Specialization: Legal Malpractice**

7 **COPLI A National Survey of Social Media Issues Impacting Lawyers: More Problems on the Horizon Here?**

Social media issues are impacting lawyers on a national scale, and some of the issues raised in other jurisdictions have problems which have yet to impact California lawyers. This program will address social media developments in other states including ethics rulings on attorney advertising, and protecting client confidentiality and privileged communications. **CLE: 1.5 Hours of Legal Ethics; Legal Specialization: Legal Malpractice**

8 LAP Competence Issues: Coping with the Unique Challenges of Legal Practice

This program will examine the stress, anxiety, depression and substance abuse challenges often encountered by legal professionals and the resources available to address these challenges. **CLE: 1.5 Hours of Competence Issues**

9 CRIM 50 Shades of “Brady”: DA Discovery Obligations and Sanctions for Violations

This program will analyze prosecution and defense attorney discovery obligations pursuant to Evidence Code section 1054. Panelists will give an overview of *Brady v. Maryland* and its progeny for what the prosecution must do to comply with the law and what the defense should be asking for in its discovery motions. **CLE: 1.5 Hours of Which 1 Hour Applies to Legal Ethics; Legal Specialization: Criminal Law**

10 LSTF Understanding Attorney Client Trust Accounts

This program will review the State Bar’s Client Trust Accounting Rules. Learn about IOLTA, preserving the identity of funds and avoiding commingling, handling of retainers and advance fees, disbursements, and recordkeeping. **CLE: 1.5 Hours of Legal Ethics; Legal Specialization: Legal Malpractice**

11 LIT Examining Opening Statement Strategies for Plaintiffs and Defense Attorneys

This program will examine the key strategies for delivering effective opening statements. **CLE: 1.5 Hours; Legal Specialization: Legal Malpractice**

12 PL Local Public Entity Employee Discipline, Discharge and Procedure: Avoiding Costly Mistakes

Sloppy disciplinary practices can have disastrous consequences. This program will provide a procedural overview of local public agency employee discipline and discharge, and how to avoid common mistakes that lead to costly litigation. Attendees will learn effective techniques to manage and document employees, including drafting performance reviews, investigating misconduct, and complying with procedural requirements before imposing progressive discipline and discharge. **CLE: 1.5 Hours**

13 SOLO Legal Issues for California Domestic Violence Shelters and Youth Shelters

This program will focus on legal issues which attorneys may encounter when dealing with clients living in domestic violence shelters and youth shelters. Learn about privilege and confidentiality in domestic violence and youth shelters; child custody and visitation in restraining order, parentage, and dissolution of marriage actions; and mandatory child abuse reports. **CLE: 1.5 Hours; Legal Specialization: Family Law**

Thursday, October 8 | 4:00 pm – 5:30 pm

14 BLS Basic Legal Skills Necessary for Advising Clients Doing Business Online

This program will cover recent developments in Cyberspace Law and offer practical tips for handling data breaches, writing privacy policies and terms of use; handling online defamation; complying with online advertising online rules; protecting your client’s intellectual property on social media and online marketplaces. Panelists also will review how to promote your law practice on the Internet in an ethical manner. **CLE: 1.5 Hours of Which .5 Hour Applies to Legal Ethics; Legal Specialization: Legal Malpractice**

15 BLS Recent Developments in Federal and California Securities Laws

This program will survey recent developments in federal and California securities laws, including the current status of rulemaking under the JOBS Act and proposed changes to Regulation D. Panelists will emphasize developments with an impact on a wide range of businesses, management and investors. **CLE: 1.5 Hours**

16 CYLA California Language Access Plan: Language Barriers Preventing Access to Justice

California has expanded language access to limited English proficient residence and potential court users. Learn about the policies and procedures, and how to take advantage of these resources to efficiently and effectively represent clients. **CLE: 1.5 Hours; Legal Specialization: Criminal Law**

17 CMFA Navigating Minefields in Fee Disputes: It’s Not Just About Fees!

Fee disputes are stressful. They also pose dangers for attorneys beyond losing the right to collect or having to refund fees; potential malpractice claims, State Bar discipline, disruption to a practice and loss of reputation. Panelists will explore these risks and offer tips to minimize exposure without resorting to litigation or arbitration. **CLE: 1.5 Hours of Legal Ethics; Legal Specialization: Legal Malpractice**

18 IL Aerospace, Defense and Export Controls: A Regulatory Minefield

This program will provide a comprehensive overview of export control regulations. Panelists will review the relevant rules and processes, and the obligations associated with the manufacture, custody, access, use, transmission and shipment of export-controlled items. **CLE: 1.5 Hours**

19 LL Mastering Employment Mediations

Experts, which include a defense employment attorney, a plaintiff employment lawyer, and an employment mediator, will reveal their cutting-edge strategies and tactics for resolving tough employment cases in mediation. **CLE: 1.5 Hours**

20 LPMT Competency and Consciousness Through Mindfulness

This program will focus on how to practice mindfulness to become more focused and increase competence. When attorneys practice mindfulness they are more present and better equipped to handle professional and personal stressors. Learn how to be more mindful, relieve stress, enhance memory, and manage emotions to better manage your practice. **CLE: 1.5 Hours Competence Issues**

21 RP Converting Public Housing to Private Ownership Under the HUD Rental Assistance Demonstration Program

The program will examine the legal issues and complexity of converting traditional public housing owned by public housing authorities to private ownership under HUD's Rental Assistance Demonstration (RAD) program. RAD is being used as a method of providing private financing for capital improvements for public housing developments. Panelists will review several projects which have recently converted using the RAD program. **CLE: 1.5 Hours**

22 SCDLS/AJC Introducing Social Media into Evidence

This program will cover the necessary steps to introduce social media evidence into the record. Panelists will demonstrate how to prepare different media, such as video from phones, for introduction. Learn how to authenticate and lay the foundation for social media evidence, as well as respond to objections. **CLE: 1.5 Hours; Legal Specialization: Legal Malpractice**

23 TAX Overview of Tax Issues that Arise in Bankruptcy

This program will review the taxes that are and are not dischargeable in bankruptcy, and the effect of a bankruptcy filing on the statutes of limitations for assessment and collection. Panelists also will cover cancellation of indebtedness income and the limitations on the use of tax attributes. **CLE: 1.5 Hours; Legal Specialization: Taxation Law, Bankruptcy Law**

24 TE Medi-Cal Long Term Care: Estate Planning Strategies Under New and Proposed Regulations

Medi-Cal Long Term Care Planning must now deal with Affordable Care Act Expanded Medi-Cal and the State's new Mandatory Managed Care Program, as well as existing rules, new recovery regulations, and the possible revision of the entire recovery program. This course will review the planning for Medi Cal eligibility, protection of estates for singles and married couples, new regulations affecting RDPs and same sex couples, coping with the state's expanded managed care program, and devising recovery avoidance strategies. **CLE: 1.5 Hours; Legal Specialization: Estate Planning, Trust and Probate Law**

Friday, October 9 | 8:30 am – 10:00 am

25 BLS When Deals Go Bad: Drafting Contracts with Litigation in Mind

There is little communication between the transactional attorneys who draft contracts and the litigators who litigate them. Learn about the drafting pitfalls that can lead to litigation, and how to avoid them. **CLE: 1.5 Hours; Legal Specialization: Legal Malpractice**

26 COGIP Is the Lid Off? Crafting an Effective Insurance Policy Limit

This program will provide useful and practical guidelines for presenting a settlement demand that will expose an insurer to excess judgment. Both attorneys who represent plaintiffs in civil litigation and defense counsel will benefit from understanding the impact of demands and counteroffers. **CLE: 1.5 Hours; Legal Specialization: Legal Malpractice**

27 CMFA Avoid the Void: Considerations in Billing Your Law Firm's Clients

Did you know that if your law firm's clients' bills do not comply with Business & Profession Code §6148(b), your entire fee agreement is voidable? Experts on fee arbitration will discuss proper billing practices and ways to avoid getting into trouble with clients and the State Bar. Block billing, charging for paralegals, team meetings, and other billing issues will be addressed. **CLE: 1.5 Hours of Legal Ethics; Legal Specialization: Legal Malpractice**

28 COPRAC Ethics Update 2015: Significant Developments in the Law of Lawyering
Panelists will review and analyze cases and ethics opinions published during the last 12 months which affect the law of lawyering. **CLE: 1.5 Hours of Legal Ethics; Legal Specialization: Legal Malpractice**

29 CRIM Elimination of Bias in Jury Selection: Wheeler/Batson/Lenix in the Courtroom
This program will cover the recent cases when race can or cannot be a proxy for preemptory challenges during jury selection. Learn how to make a record to overcome or meet a Wheeler/Batson objection. **CLE: 1.5 Hours of Elimination of Bias; Legal Specialization: Criminal Law**

30 FL The Post-Evidentiary, Pre-Appeal Phase of a Family Law Case
From “I rest” to “I appeal” is a vital period of time for either party to seek appellate review. Learn strategies and requirements for CCP 631.8 motions, tentative and intended decisions, minute orders, the statement of decision process, motions to vacate, motions for reconsideration, motions for a new trial, stays and drafting judgments and orders after hearing. **CLE: 1.5 Hours; Legal Specialization: Family Law, Appellate Law**

31 LL Employment Investigations Basics: Ethics, Bias Avoidance and Interviewing Skills (Part I)
This two-part practical skills seminar is intended for attorneys who conduct impartial workplace investigations. Learn the basics of conducting impartial investigations, ethical issues relating to attorneys conducting these investigations, avoiding unconscious biases, and interview techniques. The program will include demonstrations and best practice advice for new and more seasoned investigators. Part I will give an overview of investigations and outline the ethical issues. Part II is scheduled at Friday, October 9 from 10:30 AM - 12:00 PM. **CLE: 1.5 Hours of Which 1 Hour Applies to Legal Ethics**

32 SOLO What Do You Mean You're Not My Client?
This program will review the often murky rules concerning the identity and ethical obligations to individuals involved in your legal representation. Panelists will discuss confidentiality, privilege and best practices in various areas of law including criminal defense, probate, estate planning, bankruptcy and corporate litigation. **CLE: 1.5 Hours of Legal Ethics; Legal Specialization: Legal Malpractice**

33 SCDLS/AJC Limited Scope Representation in Bankruptcy and Consumer Law
This program will cover best practices related to complying with the ethical issues and rules raised by limited-scope representation in bankruptcy and consumer law. Get tips on how to use unbundled legal services to support a solo or small legal practice while providing an affordable way for litigants to receive the assistance they need to navigate the justice system. **CLE: 1.5 Hours of Which 1 Hour Applies to Legal Ethics; Legal Specialization: Bankruptcy Law, Legal Malpractice**

34 TE Estate Planning to Avoid Litigation: Strategies to Turn What May Seem Inevitable to Avoidable
Disagreements regarding the disposition of a deceased family member's assets are becoming increasingly prevalent. Failing to address the anticipated areas of discontent will inevitably result in the lawyers becoming the unintended beneficiaries of a decedent's estate plan. Learn estate planning strategies to avoid expensive and protracted litigation among family members. **CLE: 1.5 Hours; Legal Specialization: Estate Planning, Trust and Probate Law**

35 WC Advanced Neurological Issues in Workers' Compensation
The brain is mysterious, difficult, and daunting. Rating permanent injuries to the brain takes significant skill and understanding. This program will first provide an understanding of neurologic injuries and describe how to rate these neurological injuries using the AMA Guides, including potential Almaraz-Guzman issues. This program also will cover how to use discovery to support or attack a neurologic complaint; how to detect malingering in neurologic patients; and, how to prepare for a neurologist's deposition. **CLE: 1.5 Hours; Legal Specialization: Workers' Compensation Law**

Friday, October 9 | 10:30 am – 12:00 pm

36 BLS Bankruptcy Appellate Practice
This program will cover the nuts and bolts of a bankruptcy appellate practice, including electing between the District Court or the Bankruptcy Appellate Panel, interlocutory appeal issues, standing, mootness, pre-argument motions, jurisdictional review and the appellate record. Learn what makes an effective and persuasive appeal. **CLE: 1.5 Hours; Legal Specialization: Bankruptcy Law, Appellate Law**

37 BLS Debt Collection In The Age Of Technology And The CFPB

Debt collectors face countless restrictions imposed by federal and state laws, with more on the way. Advancements in technology also are fundamentally changing the industry. This program will review the impact of changing technology, the state of debt collection law in California, the impact of the CFPB on debt collection, and what to expect in the future. **CLE: 1.5 Hours**

38 CADR Tackling Emotion in Mediation: Tips for Dealing with People in Conflict

This program will analyze the spectrum of emotions people experience during mediation. Learn what triggers those emotions, how to recognize and address the psychological biases and heuristics behind those emotions, and how best to prepare yourselves and your clients to experience and address emotions before, during and after the mediation or other negotiations. **CLE: 1.5 Hours**

39 COPRAC Dealing with Difficult Clients in Your Law Practice

This program will discuss identification of the difficult client, and legal and personal strategies to maintain a productive working relationship and minimize conflict. **CLE: 1.5 Hours of Legal Ethics; Legal Specialization: Legal Malpractice**

40 EL CEQA Compliance Timing: Judicial Treatment of “Pre-Commitment” Since *Save Tara*

Since the Supreme Court decided *Save Tara v. West Hollywood*, many CEQA petitioners have attempted to demonstrate unlawful pre-commitment to projects. Few have succeeded. The pendulum seems to have swung in the opposite direction. This program will cover the nuances of the post-*Save Tara* decisions and provide practical pointers to consider during the CEQA process. **CLE: 1.5 Hours**

41 IP Lions, Tigers & Friends: Social Media Case Law Review

In the past year, there have been a significant amount of legal decisions made addressing social media and related issues-- terms of use, privacy, and copyright infringement. Panelists will explain these rulings and how they impact you and your law firm's client. **CLE: 1.5 Hours**

42 IL International Law: EB-5 Immigrant Investor Update

The EB-5 Immigrant Investor visa has been around for nearly a quarter century. It has become popular in the last few years because of a confluence of factors including the banking crisis of 2008, and the economic ascendancy of China. There have been a number of significant changes in the way EB-5 applications are processed, and the SEC has turned its attention to recent fraudulent schemes involving EB-5 regional centers. This program will cover the current status of the program, potential uses in real estate and other projects, and alternatives for immigrant investors. **CLE: 1.5 Hours; Legal Specialization: Immigration and Nationality Law**

43 LL Employment Investigations Basics: Ethics, Bias Avoidance and Interviewing Skills (Part II)

Part II of this practical skills seminar on conducting impartial workplace investigations will focus on identifying and avoiding biases, and interviewing techniques. Part I is scheduled at Friday, October 9 from 8:30 AM - 10:00 AM.

CLE: 1.5 Hours of Which 1 Hour Applies to Elimination of Bias

44 RP Real Property Law: The Pros and Cons of Using Standard Residential and Commercial Leases

This program will address the issues that may arise when your client is using form leases in rent control jurisdictions or when a tenant plans on renovating a leased space. Panelists will discuss important/controversial lease provisions including notice, lease default remedies, liquidated damages and more, as well as when such clauses should be considered when negotiating/drafting a lease. **CLE: 1.5 Hours**

45 TE The “Guide to the Rules of Professional Conduct for Estate Planning, Trust and Probate Counsel”

This program will review the recently released Third Edition of The Guide to the California Rules of Professional Conduct for Estate Planning, Trust and Probate Counsel. Panelists will discuss recent ethical developments and the trend toward liability to non-clients, to successor fiduciaries occupying the office of the ‘client’, and the difficult issues surrounding “incapacitated” clients and representation of “families.” **CLE: 1.5 Hours of Legal Ethics; Legal Specialization: Estate Planning, Trust and Probate Law, Legal Malpractice**

46 WC Workers' Compensation Trial Practice: Putting Forth Your Best Case

A good trial is like a good painting: it takes months to prepare, a day to frame, and tells a moving story through a clear picture. Too often, the workers' compensation litigator views the trial as an informal formality. This program will cover trial procedure from A to Z—how to prepare your trial by laying a proper foundation in discovery, the pre-trial conference statement, best practices for presenting your case on the day of trial, and offer guidance on exhibits, witnesses, trial briefs, and post-trial briefs and reconsideration. Learn about the common mistakes litigators make at trial, and how to avoid them. **CLE: 1.5 Hours; Legal Specialization: Workers' Compensation Law**

Friday, October 9 | 1:30 pm – 3:00 pm

47 BLS/RP Practical Tips for Negotiating Commercial Leases for Franchise Locations

This program will discuss various practical issues involved in negotiating commercial leases for franchise locations, including subleasing, collateral assignments of lease, prioritization of security interests, franchisor brand protection, and trade name and use clauses. **CLE: 1.5 Hours; Legal Specialization: Franchise and Distribution Law**

48 CMFA Tricky Billing Issues: It's Not Easy Making Green in a Busy Law Firm

Providing fair, accurate bills isn't easy in a busy law practice. This program will cover challenging billing issues, ethics, hot issues and recent cases, and offer practical tips to help attorneys profitably and ethically bill their clients. **CLE: 1.5 Hours of Legal Ethics; Legal Specialization: Legal Malpractice**

49 COAF Walk the Walk: Identifying and Eliminating Bias in the Workplace

The legal profession has been consciously grappling with deep-rooted and often subtle issues of diversity, inclusion and bias within the legal profession. Film-maker Abby Ginzberg examines what changes have occurred by making the film *Walk the Walk* in which scenes and dialogue reflect real-life experiences of the people who were interviewed. Ginzberg and the panel will identify and address the issues portrayed in the film and offer suggestions on ways to eliminate bias in the legal profession. **CLE: 1.5 Hours of Elimination of Bias**

50 CRIM Courtroom Etiquette: Dos and Don'ts from the Judicial Perspective

This basic seminar will focus on how to make the best appearance in the courtroom to better present your case and make a favorable impression before the judge, court staff and a jury. **CLE: 1.5 Hours of Which .5 Hour Applies to Legal Ethics; Legal Specialization: Criminal Law, Legal Malpractice**

51 FL Recent Developments in Family Law

This program will cover new cases, statutes, and rules impacting all areas of a Family Law practice, from the perspective of both the Bench and Bar. **CLE: 1.5 Hours; Legal Specialization: Family Law**

52 IL Unaccompanied Minors: An International Law Approach to the Humanitarian Crisis at the U.S. Border

The recent surge of unaccompanied minors from Central America seeking refuge in the United States and the actions of U.S. law enforcement have raised many legal and policy issues here and abroad. This program will address the international legal issues arising from these developments. Panelists will cover several key topics including U.S. obligations under the United Nations Refugee Convention, the legality of family detentions under international human rights law, the aid to children escaping violence and persecution, and the impact on California as a border state. **CLE: 1.5 Hours; Legal Specialization: Immigration and Nationality Law**

53 PL Public Law: Protecting Your Agency's Employees from Threats and Harassment

Public agency employees often encounter threats and harassment from members of the public and fellow employees. This program will provide an overview of what counsel needs to know about protecting their agency's most valuable resource from threats and harassment. Panelists will outline the legal tools designed to protect employees from threats of violence. **CLE: 1.5 Hours**

54 RP Real Estate/Mortgage Issues: Dodd Frank Act

Due to adoption of the Dodd Frank Act, the Consumer Financial Protection Bureau may be the most significant development in the area of real estate finance in many years. The Bureau, who aggressively monitors the industry, is now levying substantial fines against banks and mortgage services, and recently announced new federal mortgage "ability to pay" rules. This program will cover the new rules and how to protect your clients. **CLE: 1.5 Hours**

55 TAX Partnership Tax Nuts & Bolts: Common Pitfalls to Avoid When Forming Partnerships and LLCs

This program will cover the nuts & bolts of partnership taxation, including a discussion of the proposed regulations on partnership liability allocations. Learn how these new regulations can dramatically tighten the rules and trigger gains for many taxpayers with negative capital accounts. The program also will review planning techniques under both current law and the proposed changes. **CLE: 1.5 Hours; Legal Specialization: Taxation Law, Legal Malpractice**

56 TE Understanding the Remedies Available for Financial Elder Abuse

This program will provide an overview of the remedies available to address different forms of elder financial abuse. Panelists will provide guidance and tips on when and how to get social services or law enforcement involved; how to resolve the problem without litigation; and what remedies are available under the consumer protection statutes, elder abuse statutes and the Probate Code. **CLE: 1.5 Hours; Legal Specialization: Estate Planning, Trust and Probate Law**

57 WC Workers' Compensation Medical Treatment Update

Medical treatment authorization is the hot topic in workers' compensation this year. Dubon, Stevens, IMR, UR, and the new MTUS are just some of the issues changing the way we authorize medical treatment. Panelists will discuss the recent changes in workers' compensation medical treatment including the latest case law, statutes, and regulations. Get tips and tricks on litigating medical treatment disputes, and hear about the best predictions for the future of medical treatment authorization. **CLE: 1.5 Hours; Legal Specialization: Workers' Compensation Law**

Friday, October 9 | 3:30 pm – 5:00 pm

58 AN Antitrust, Privacy and Unfair Competition Law 101

This primer on federal and state antitrust and privacy laws and California's UCL provisions will provide practitioners with an understanding of what constitutes unlawful conduct and how to effectively plead and defend against claims. **CLE: 1.5 Hours**

59 CYLA Review of Federal Discovery Obligations for Prosecutors

This course will discuss federal discovery obligations for prosecutors. **CLE: 1.5 Hours; Legal Specialization: Criminal Law**

60 CAC Appeals: That's Not How We Do It In This Court

Clerks of the Court from all six appellate districts take you behind the scenes in appellate procedure. Learn how appeals are actually processed and how understanding local practices and preferences can help navigate your appeal to a successful outcome. This one-of-a-kind program is a "must" for any lawyer wanting first-hand insights into how the system really works. **CLE: 1.5 Hours; Legal Specialization: Appellate Law**

61 COGIP 2015 Update on Healthcare Reform

This program will cover the recent developments in Federal Healthcare Reform, including discussion of Supreme Court opinions impacting premium subsidies. **CLE: 1.5 Hours**

62 CMFA Top Ten Things that Put Lawyers in Hot Water

At this program ethics specialists will discuss issues that create real problems for lawyers which expose them to risk of disbarment, inactive enrollment, and fines and penalties. **CLE: 1.5 Hours of Which 1 Hour Applies to Legal Ethics; Legal Specialization: Legal Malpractice**

63 COPLI Sometimes It Takes Just One: Know Where Your Insurance Policy Takes You If A Claim Is Made

Attorneys with malpractice insurance policies often fail to review the policy until a claim arises. There are many important aspects to lawyers professional liability insurance, however, including prior acts dates and extended reporting periods, and deductibles and settlement provisions. This program will address how a lawyer's professional liability insurance policy operates, and outlines the issues to carefully follow once a claim arises. **CLE: 1.5 Hours of Legal Ethics; Legal Specialization: Legal Malpractice**

64 COPRAC Ethics for the Solo and Small Firm Lawyer

This program will examine common ethical dilemmas that solo and small firm practitioners encounter and provide professional responsibility and risk management tips. **CLE: 1.5 Hours of Legal Ethics; Legal Specialization: Legal Malpractice**

65 CRIM Ethics for Criminal Law Attorneys

This program will focus on the ethical rules governing the conduct of criminal attorneys, both prosecutors and defense attorneys, and how to balance competing duties to clients, the criminal justice system, and the State Bar. Panelists will cover ethical rules and case law, and offer tips to prevent ethical dilemmas. Learn about prosecutorial misconduct, client confidentiality, proposed client perjury, the duty of candor and fair dealing. **CLE: 1.5 Hours of Legal Ethics; Legal Specialization: Criminal Law**

66 IP Intellectual Property Law: Patent, Trademarks, Copyrights and Trade Secrets

This program will outline the basics of intellectual property law, covering needed know-how in patent, trademarks, copyrights and trade secrets. **CLE: 1.5 Hours**

67 LAP Competence Issues: Coping with the Unique Challenges of Legal Practice

This program will examine the stress, anxiety, depression and substance abuse challenges often encountered by legal professionals and the resources available to address these challenges. **CLE: 1.5 Hours of Competence Issues**

68 PL Public Law: Handling Contractor Claims on Public Works Construction Projects

State and local governments construct millions of dollars a year in improvements ranging from airports, freeways and roads, public buildings, flood control and other public improvements. These projects are fraught with claims leading to expensive litigation. This program will focus on the most effective way to handle public works construction claims. **CLE: 1.5 Hours**

Saturday, October 10 | 8:30 am – 10:00 am

69 AN Risky Business: Privacy Law in the Digital Age

Learn what it means to be privacy lawyer, how privacy investigations are conducted, privacy litigation is brought and litigated, and how privacy law is developing hand-in-hand with technological advancement. Panelists will discuss the challenges that hackers present to modern business, how companies deal with data breach emergencies, the role of attorneys in providing counsel to companies who are the target of hackers and privacy issues in the regulatory context. **CLE: 1.5 Hours**

70 CYLA Blurred Lines Between Social Media and Attorney Advertising: Connecting Ethically

This program addresses the business development benefits and ethical pitfalls of social media advertising. Panelists will illustrate how attorneys ethical duties are triggered when they utilize social media and inform you on specific terminology and concepts used by the most popular social media platforms such as Facebook, Twitter and LinkedIn. **CLE: 1.5 Hours of Which .5 Hour Applies to Legal Ethics**

71 CAC Petitions for Review in the California Supreme Court

This program will cover the procedural and substantive issues related to petitioning for review in the California Supreme Court. Procedural issues include technical details, rule requirements, and time deadlines for filing. Substantive issues include the nature of the court's jurisdiction, decision process for granting review, and distinctions between cases typically granted and denied review. **CLE: 1.5 Hours; Legal Specialization: Appellate Law**

72 COPLI Client Threatening to Sue: Best Practices for Mitigating Your Exposure

Generally, statistics demonstrate that lawyers can expect one malpractice claim for every seven years of practice. While many practitioners will never be subject to such a claim, when one occurs, it is important to understand your relevant professional responsibility requirements and how to deal with the insurance policy and insurer. This program will cover the best practices for dealing with a malpractice claim once it arises. **CLE: 1.5 Hours of Legal Ethics; Legal Specialization: Legal Malpractice**

73 EL Fracking Law 101

California has recently enacted SB4 and is developing regulations on well stimulation, which will address some, but not all, concerns regarding the safety and environmental effects of fracking. No published California case has determined whether local governments may prohibit or regulate fracking. Learn what fracking is, how it is regulated, and arguments for and against local regulation. **CLE: 1.5 Hours**

74 IP Navigating the Process: Best Practices in Clearing, Filing & Managing Trademarks

Every trademark practitioner, whether newly minted or well-seasoned, will come up against challenges in the trademark process. Panelists will share their best practices in clearing, filing, and managing the trademark process. **CLE: 1.5 Hours**

75 IP Intellectual Property Law: Hot Topics in Data Protection

This program will address recent developments in data protection and cybersecurity, including relevant case law addressing data protection in the IP context, trends in criminal enforcement, and recent legislative and regulatory action/proposals. **CLE: 1.5 Hours**

76 IL On-line Sales to EU-Customers Under The 2011 Directive on Consumer Rights

Is your client selling its goods and services directly to end-users in EU countries? This program will offer a primer on EU distance-sales and on-line marketing law in light of sweeping changes brought about by the 2011 EU Directive on Consumer Rights and recent amendments to the E-Privacy Directive. **CLE: 1.5 Hours**

77 LSP You Be The Judge

Should a judge be removed from office for mistreating attorneys? What discipline should be imposed when a judge displays gender or racial bias towards counsel? Can a judge's misconduct towards counsel be excused if the attorney was unduly provocative? Members of the Commission on Judicial Performance discuss disciplinary standards and solutions, and will present case problems for an audience vote. **CLE: 1.5 Hours of Elimination of Bias**

78 LIT Trial Lawyer Hall of Fame Series: Voir Dire

Panelists will share their thoughts and practical advice on the art and science of jury selection. **CLE: 1.5 Hours; Legal Specialization: Criminal Law**

79 TAX Effective Representation with IRS Tax Collection

This program will be a primer on various IRS programs, strategies and new developments with discussion of tax lien filings and re-filings. Panelists also will focus on the newly expanded post-appeals mediation program. **CLE: 1.5 Hours; Legal Specialization: Taxation Law**

Saturday, October 10 | 10:30 am – 12:00 pm

80 AN Insights from the Battlefield: Advanced Trial and Class Action Practice

Seasoned practitioners who have recently tried complex antitrust and class action cases to jury verdicts will provide their practical guidance on effective, advanced trial techniques and briefing strategies. **CLE: 1.5 Hours**

81 BLS Ninth Circuit & Supreme Court Bankruptcy Year in Review

This program will review the recent bankruptcy decisions issued by the Ninth Circuit Court of Appeal, the Bankruptcy Appellate Panel for the Ninth Circuit, and the U.S. Supreme Court. **CLE: 1.5 Hours; Legal Specialization: Bankruptcy Law**

82 CADR Improve your Mediation Skills

Learn how to develop essential mediation skills to achieve a successful mediated result. The legal nature of the program is to build practical mediation skills and the learning outcome will be to provide skills based training to help both mediators and attorneys representing their clients. **CLE: 1.5 Hours**

83 CFC Access Issues in Federal Court: Language, Indigency, and Elimination of Bias

Litigants face many obstacles to participating in the judicial process and presenting a case in the face of language barriers or proceeding pro se. This program will focus on the difficulties caused by these issues, their impact on access to federal court, and address ways to help eliminate bias and promote access to justice. **CLE: 1.5 Hours of Elimination of Bias**

84 COPLI Communications with/Concerning Dissatisfied Clients: Rules of Confidentiality and Privilege?

When a client expresses dissatisfaction with legal services or alleges malpractice, questions can arise as to how the responsible attorney should communicate about the dispute. This program will address the ethical duties associated with communicating with a client or a client's new counsel, intra-firm communications, and communications with important external parties such as insurance brokers or insurance carriers. **CLE: 1.5 Hours of Legal Ethics**

85 COPRAC Ethics of Getting Your Legal Fees Paid

This program will cover the ethical considerations that may arise in connection with collecting attorney fees, including issues with retainer agreements, settlement of funds, preserving a discharged attorney's contingency fee, offset issues, and payments involving third parties. **CLE: 1.5 Hours of Legal Ethics; Legal Specialization: Legal Malpractice**

86 IP Intellectual Property for Non-IP Attorneys: Spotting and Dealing With IP Issues

Intellectual Property is an umbrella term that defines a number of interrelated doctrines of law. Almost always, IP issues need to be considered when advising clients—from entity formation to licensing, to creating a website. This program will help you identify and deal with IP issues when advising your clients. **CLE: 1.5 Hours**

87 LPMT Honing Your Client Intake Skills to Avoid Practice Challenges
Through video clips of mock intake interviews, this program will focus on identifying the most common causes of attorney-client discord and how to deal with them before problems erupt. Panelists also cover how to recognize and adjust unreasonable client expectations, and how to identify troubling client characteristics and address them. **CLE: 1.5 Hours; Legal Specialization: Legal Malpractice**

88 LIT Trial Lawyer Hall of Fame Series: Closing Argument
Renowned trial lawyer James Brosnahan explains how he prepares for closing argument and shares practical advice that you can use to deliver better arguments in your own cases. **CLE: 1.5 Hours**

89 OPC Current Ethical Issues for In-House and Outside Counsel
Learn what in-house counsel need to know about ethics and outside counsel, and what outside counsel need to know about in-house counsel (or acting as such) and ethics. **CLE: 1.5 Hours of Legal Ethics**

90 RP 10 Things Non-Condemnation Lawyers Should Know About Eminent Domain
This program will address “seven” problems and/or issues to consider when drafting, negotiating and dealing with condemnation clauses in contracts including leases, purchase and sales agreements and options. Learn about the “three” practice tips on what to do when your client gets the call that all or a portion of their property or business location may be taken for a public project. **CLE: 1.5 Hours**

Saturday, October 10 | 2:00 pm – 3:30 pm

91 CADR Get the Most Out of Mediation: Prepare for and Use Mediation Effectively
Panelists will present an interactive stop-action mock mediation with dos and don’ts (one set doing it wrong and one set doing it right). Topics covered include preparing a client for mediation, using the mediator to solve problems before mediation (client or case issues), and mediating effectively to a positive outcome. **CLE: 1.5 Hours of Which .5 Hour Applies to Legal Ethics**

92 COPLI The Past Year in Review: Recent Developments in the Law of Lawyering
This program will cover the 2014-15 developments impacting how law is practiced in California, including recent malpractice and ethics decisions. Learn the rules concerning attorney disqualification, the attorney-client privilege, joint client representation and claims for the recovery of attorney’s fees. **CLE: 1.5 Hours of Legal Ethics; Legal Specialization: Legal Malpractice**

93 COAF Achieving Diversity in Higher Education and the Legal Profession
This program will feature a dialogue on the current admissions policies in higher education and impact on the diversity pipeline into the legal profession. Panelists will argue that institutions of higher learning must focus on admitting and educating a diverse class of students who will be critical thinkers, active citizens, and publicly spirited leaders, and will present solutions to promote diversity within the legal profession. **CLE: 1.5 Hours of Elimination of Bias**

94 CRIM Kids Caught Up in the Kourtroom: Trends in Juvenile Delinquency and Dependency Practices
This program will provide an overview of the laws for juveniles who are charged with criminal offenses, when legal guardians are unable or unwilling to support the minor, or the court deems that the parent/guardian does not have the juvenile’s best interest at the forefront. **CLE: 1.5 Hours; Legal Specialization: Criminal Law**

95 FL When Three is Not A Crowd: Multi-Parent Families
California judges now have discretion to determine that a child has more than two legal parents if necessary to avoid detriment to the child. This program will address the appropriate applications of the multi-parent law, including where there are Voluntary Declarations of Paternity, where children have been parented by multiple fathers, in same-sex-headed families and where multiple jurisdictions are involved. **CLE: 1.5 Hours; Legal Specialization: Family Law**

96 LL The Year In Review: An Overview of Recent Employment Law Cases
This program will focus on the latest and greatest employment law cases, highlighting those cases that are of most importance to the employment practitioner whether plaintiff, defense or neutral. **CLE: 1.5 Hours**

97 LPMT How to Find and Use Evidence Among Large E-discovery Projects
Gathering electronically stored information, processing it for production and reviewing it for hot documents is only useful if the attorney has a system for using the relevant documents in depositions, motion exhibits, or trial. This program will cover best practices for organizing and using documents from large e-discovery productions. **CLE: 1.5 Hours**

98 PL Overview and Current Developments to Open Meetings Law

This program will provide an overview and update of California's open meeting law, the Brown Act and Government Code §§ 54950-54962. Learn about covered entities and bodies, what constitutes a meeting, agenda requirements, special or emergency meetings, public comment, and recent legislation and cases decided over the past year. **CLE: 1.5 Hours**

99 RP Evolution of Easements in California and the Rise of the Equitable Easement

This program will provide a comprehensive overview of easement law in California. Learn how various easements are established and how the court created equitable easement has become prevalent. If your practice involves real property disputes, this course gives you the tools to spot and evaluate any easement. **CLE: 1.5 Hours**

100 SOLO Protect Your Online Reputation While Ethically Using Social Media

As the use of social media by attorneys grows, so does its abuse. Lawyers get bad reviews from all sources. Learn how to pro-actively combat this from happening, as well as clear your reputation after it occurs, within the confines of the latest legal ethics opinions. **CLE: 1.5 Hours of Legal Ethics**

101 TE Recent Developments in Trust and Estates Law

This program will review the recent developments in trust and estate planning, estate tax, and related litigation. Panelists will provide summary descriptions and a brief discussion of the important decisions in each of these areas of the law, with the intended outcome of bringing the practitioner up-to-date on the most current law and providing the necessary materials for more in depth review. **CLE: 1.5 Hours; Legal Specialization: Estate Planning, Trust and Probate Law and Taxation Law**

Saturday, October 10 | 4:00 pm – 5:30 pm

102 CYLA Recent Developments in Privacy and Data Security Law

As new disruptive technologies and institutional practices emerge, privacy and data security laws are racing to catch up. This program will provide an overview of the patchwork of major federal and state privacy and data security laws with a focus on recent developments and hot topics in this emerging field. **CLE: 1.5 Hours**

103 CADR Arbitration 2015: The Biggest Issues in Arbitration Today

This program will cover the top issues in arbitration today, including the perception that arbitration is in decline, and whether that is true; whether arbitration has become too much like litigation, and ways to cut costs; how and why you might include a right of appeal in arbitration; considering a reference or a temporary judge; and how arbitration clauses affect the cost and time of arbitration. **CLE: 1.5 Hours**

104 CAC Appeals: Write Right . . . Brief Brief Writing

Appellate Justices give their inside perspective on what it takes to write briefs that grab the attention of the Court of Appeal. Learn how well-crafted briefs can compel the most favorable outcome for your client. Avoid common mistakes and distractions. This is a rare opportunity to hear what your "audience" really thinks of briefs that get filed. **CLE: 1.5 Hours; Legal Specialization: Appellate Law**

105 FL Domestic Violence in the New Era

This program will review the recent case law and statutory enactments in the field of domestic violence geared toward the practical application of representing clients in DVPA proceedings. The course will serve as a refresher of existing case law with a comparative study of recent cases and trends in this important field. **CLE: 1.5 Hours; Legal Specialization: Family Law, Criminal Law**

106 IL International Law: Protecting Clients Trademark Rights Worldwide

This program will focus on protecting the trademark rights of clients who offer their products and services worldwide. Small firm practitioners to lawyers in larger firms should consider protecting their client's trademark rights not only in the U.S. but around the world. The Community Trademark, the Madrid Protocol and the Paris Convention all provide valuable means for such protection. Learn the "how-to" of trademark clearance and filing in the U.S. and abroad. **CLE: 1.5 Hours**

107 LPMT In My Opinion: A Review of the Latest Technology Rules to Protect Attorney & Client Confidentiality

This program will review recent State Bar Committee on Professional Responsibility and Conduct (COPRAC) opinions regarding an attorney's use of technology, and help to ensure that you are meeting the standards of competence to protect both the privacy and confidentiality of your law practice and your clients' information. **CLE: 1.5 Hours of Which 1 Hour Applies to Legal Ethics; Legal Specialization: Legal Malpractice**

108 LSP/CEB Using Judicial Council Forms Correctly in a Probate Proceeding

This entry level program is intended for attorneys new to the practice of estate planning who seek guidance on which forms to use when initiating and handling a probate proceeding. Panelists will review the Judicial Council forms that are required to be filled out and filed in a probate matter. **CLE: 1.5 Hours; Legal Specialization: Estate Planning, Trust and Probate Law**

109 LIT/CRIM Ethics and Social Media: Cyber-sleuthing, Predatory Friending and More

This program will review how to use Facebook, Twitter, and LinkedIn in case investigation, preparation, and litigation. In addition, the program will address the related rules concerning disclosure of private information, contact with represented parties, trial publicity, and more. **CLE: 1.5 Hours of Which .5 Hour Applies to Legal Ethics; Legal Specialization: Legal Malpractice**

110 PL Developments in Public Law and State Bar Ethics

Public lawyers face unique and often challenging ethical issues, ranging from higher ethical standards expected of government lawyers, to special ethical rules relating to organizational representation. This program will highlight recent developments in public law ethics and potential changes to State Bar ethics rules in general. **CLE: 1.5 Hours of Legal Ethics**

111 SOLO Basics and New Developments in Intellectual Property Law

This program will cover the basics and recent developments in Intellectual Property law, including patents, trademarks, copyright, trade secrets and internet law. **CLE: 1.5 Hours**

112 SBC The Dark Side: Why Lawyers Do Bad Things – An Encore

This new and improved course is back by popular demand! Join a forensic psychologist and the State Bar Court Presiding Judge in exploring theories behind the question of what motivates smart and talented people to act unethically, and learn to avoid psychological traps that may lead to professional misconduct. **CLE: 1.5 Hours of Which .5 Hour Applies to Legal Ethics; Legal Specialization: Legal Malpractice**

Sunday, October 11 | 8:00 am – 9:30 am

113 CYLA Litigating Private Attorney General Act Claims in the Aftermath of Supreme Court Decisions

While much attention has been given to whether class action standards apply to Private Attorney General Act (PAGA) claims and whether they must be arbitrated, little attention has been paid to how PAGA claims will be litigated. Panelists will discuss developments in PAGA law and offer strategies for litigating claims in the wake of Arais and Iskanian. **CLE: 1.5 Hours**

114 COGIP Insurance 101: Key Concepts of Insurance

This program will cover the basic fundamentals of insurance. Panelists will discuss the nature of insurance, insurance regulation, and the rules of contract interpretation in California. Learn about the different policy lines and duties, and the obligation of insurers and policyholders under an insurance policy. **CLE: 1.5 Hours; Legal Specialization: Legal Malpractice**

115 COAF Addressing the Needs of Persons with Disabilities in the Criminal Justice System

With the 25th Anniversary of the Americans with Disabilities Act in July 2015, we continue to find a high percentage of individuals with disabilities in the criminal justice system. Jails and prisons have become the “new asylums”. This program will address the needs and biases faced by persons with disabilities in prison and in the streets across America. **CLE: 1.5 Hours of Which .5 Hour Applies to Elimination of Bias; Legal Specialization: Criminal Law**

116 EL Greenhouse Gases and Climate Change: A Regulatory System Comes of Age

Greenhouse gases no longer are a new regulatory issue area. In 2015, the response to climate-altering emissions has matured into a full-fledged, multi-faceted regulatory system. This program will provide an overview of the current regulatory landscape, both in California and at the national level, and will discuss what comes next for industry, the public, and the climate. **CLE: 1.5 Hours**

117 FL Dealing with Children Who Resist Contact with a Parent

A child resists, or categorically refuses, contact with a parent. Experience has demonstrated the existence of distinct varieties of resistance – with each variety requiring unique responses from judicial officer, counsel and mental health professional. This program will explain which court orders can be effective, and which therapeutic interventions have value. **CLE: 1.5 Hours; Legal Specialization: Family Law**

118 LL Bullet-Proof Deposition Preparation Techniques for the Plaintiff Employee

This master-level seminar will initially cover the basics of how to prepare the plaintiff employee for deposition and then quickly move into advanced techniques including using videotaped moot deposition sessions and the proper utilization of jury/witness preparation experts. **CLE: 1.5 Hours**

119 LIT Rule 3-110 and Substance Abuse: A Judicial Perspective

This program will cover the obligations of attorneys under California Rule of Court 3-110 (duty to act competently) as they relate to substance abuse, examining the current case law and disciplinary procedures for violations. **CLE: 1.5 Hours of Competence Issues**

Sunday, October 11 | 10:00 am – 11:30 am

120 CAC/CRIM/LIT Advanced Civil and Criminal Writ Practice in the California Court of Appeal

This program will provide in depth discussion of writ practice in the Court of Appeal, including strategies for the trial attorney or litigator, applicable case law and statutes concerning orders subject to writ review, time deadlines, how to prepare a writ petition, and more. Prior knowledge of writ practice helpful, but not mandatory. **CLE: 1.5 Hours; Legal Specialization: Appellate Law, Criminal Law**

121 COGIP Cyber Principles for Attorneys

With new cyber security threats developing daily, attorneys are in a unique position as they need to protect themselves and their personal data, and protect their clients data. This program will review cyber security steps for the attorney and the client. **CLE: 1.5 Hours**



122 CRIM In Limine Motions: When Before You Begin Trial

This program will address all motions before you start trial. Topics include bail reduction or release on an O.R., discovery, speedy trial, PC 995 motion to dismiss, motion to suppress pursuant to PC 1538.5, Pitchess, Trombetta, and more. **CLE: 1.5 Hours; Legal Specialization: Criminal Law**

123 LPMT Management Tools to Create Effective Law Office Employees

This program will cover the various approaches available to law firm management, large or small, to encourage, train and provide powerful experience to law firm personnel to grow the firm's most critical asset-- its people. Learn about the use of effective performance evaluations, training techniques and compensation models to establish long-term retention of high quality law firm personnel. **CLE: 1.5 Hours**

124 LSP/WLI/PL Recent Developments in Constitutional Law

Dean Erwin Chemerinsky of the University of California, Irvine, School of Law, will discuss significant issues in federal constitutional law, using recent United States Supreme Court decisions as a basis for identifying trends and themes in constitutional law. Professor Chemerinsky has written and lectured extensively on many topics, including the U.S. Supreme Court, and is the author of textbooks on constitutional law and federal jurisdiction. Presented by the Witkin Legal Institute. **CLE: 1.5 Hours**

125 SOLO Stop! I have a Restraining Order – I Still Love You!

This program will explore the legal issues in domestic violence restraining orders and enforcement of the provisions when there are violations of issued orders. Panelists will address domestic violence, civil harassment, and elder abuse restraining orders, and will provide the tools to obtain favorable orders to the client's position in court. **CLE: 1.5 Hours; Legal Specialization: Family Law, Criminal Law**

126 TAX Divorce and Taxes (Death is Less Bothersome)

Clients dealing with marital separation and divorce ignore, at their peril, the tax implications of their actions during the dissolution. Learn what every separating and divorcing spouse should consider from a tax perspective, as well as possible actions to protect their financial well-being. **CLE: 1.5 Hours; Legal Specialization: Taxation Law, Family Law**



INFORMATION

REGISTRATION

Deadlines: Pre-registration does not guarantee space in a class. Many programs will sell out in advance, so register early. See *Pre-Registration & Event Fee Form* for registration and ticketed event fees.

September 14 Early-bird Pre-Registration (Save \$100).
September 21 Pre-Registration Deadline
October 8 On-site Registration Opens

Procedure: Refer to the *Pre-Registration & Event Fee Form* and *Course Selector* inside this Preview. Complete steps 1- 3 and file Pre-Registration/Event Fee Form and Course Selector online, fax, or mail.

Online www.calbar.ca.gov/annualmeeting

Fax 415-538-2368.
 Fax Pre-Registration Form and Course Selector. Do not mail original form. Credit card only. Confirmation of receipt of faxed registration forms cannot be confirmed by telephone.

Mail 2015 Annual Meeting Pre-Registration
 The State Bar of California
 180 Howard Street
 San Francisco CA 94105-1639

Refunds/Cancellation Policy: Registration and/or ticket refund requests must be received (not postmarked) in writing by the State Bar of California no later than **September 21, 2015** and are subject to a \$50 service charge.

Registrant Guests: All Annual Meeting attendees must register to attend the Education Programs. Complimentary registration to education programs is not available.

Registration Questions/Special Assistance: For Registration questions call 415-538-2508. For information or special assistance call 415-538-2210 or email AnnualMeeting@calbar.ca.gov.

Tickets to Annual Meeting Luncheons and Special Events: The California Women Lawyer's Dinner, President's Festival, the State Bar Breakfast, and the State Bar Luncheon and Alexander F. Morrison Address are ticketed events. The fee to attend is not included in your registration fee. The Thursday Networking Luncheon is a ticketed event, but is complimentary to registered attendees. Refer to the ticketed events page inside this Preview for details. Purchase tickets in advance or RSVP for the complimentary event on the Pre-Registration & Event Fee Form. Reserve early, as these events may sell out. Refunds and exchanges may not be available. Event speaker substitutions may occur.

HOTEL

Headquarters: The State Bar Annual Meeting education programs, meetings, functions and events will be held at the Anaheim Marriott, Sheraton Park Hotel, and the Anaheim Convention Center. Refer to the Printed Program for room locations. The **Annual Meeting Registration** area will be located in the Marquis Foyer, Anaheim Marriott Hotel.

A block of rooms has been reserved for the State Bar Annual Meeting attendees at the **Anaheim Marriott** and the **Sheraton Park Hotel**. Registrants must make their hotel reservations within one of these two room blocks. *We can only keep our registration fees low when you book your hotel room at the Annual Meeting headquarters hotel(s).*

Hotel Room Reservations: Reserve your room before September 14, 2015. Make your reservations online or by phone. Go to www.calbar.ca.gov/annualmeeting and select the link to Hotel Reservations, or telephone the hotel at the number(s) noted below. Go to www.calbar.ca.gov/annualmeeting and select the link to Hotel Reservations, or telephone the hotel at the number(s) noted below and mention the State Bar of California.

Anaheim Marriott	Sheraton Park Hotel
700 West Convention Way Anaheim CA 92802	1855 South Harbor Blvd. Anaheim CA 92802
Special group rate: \$209 single/double 877-622-3056	Special group rate: \$209 single/double 866-837-4197

Hospitality Suites: Suite requests must be made in writing and sent to Theresa Raglen, Office of Education, The State Bar of California, 180 Howard Street, San Francisco, CA 94105 or email Theresa.Raglen@calbar.ca.gov.

Parking:

Anaheim Marriott – Guest self-parking is \$24 per day. Valet parking is \$28 per day.

Sheraton Park Hotel – Guest self-parking is \$16 per day. Valet parking for overnight guests is \$21 per night.

Any members attending the event and not staying overnight will be subject to an hourly self-parking rate of \$8 for the first hour, \$2 each half-hour thereafter, and a maximum charge of \$20 per day. Non-guest attendees will be subject to an hourly valet rate of \$10 for the first hour, \$2 each half-hour thereafter, and a maximum charge of \$25 per day.

TRAVEL

Rental Car: Hertz Car Rentals offers Annual Meeting attendees discount rates on many classes of cars. Reserve online at www.hertz.com or telephone 1-800-654-2240. Use the **Discount CDP# 67649** when making your reservation.

United Air: Fly United Airlines to the Annual Meeting and receive a 3% discount on published fares. Book online at www.ual.com and use **Offer Code ZV6F947577**

GENERAL ANNUAL MEETING INFORMATION

Exhibition Show and Hours: We welcome all to join us at the 2015 Exhibition at the Anaheim Marriott in the Marquis Ballroom. The Exhibit Hall is open to all State Bar members and guests. An Annual Meeting badge or Exhibit Hall pass (given at registration to non-registrants) is required for admission.

Complimentary coffee will be offered in the Exhibit Hall on Friday and Saturday morning.

Thursday, October 8

12:30 pm – 6:30 pm Networking Luncheon, Exhibits, and Happy Hour

Friday, October 9

8:00 am – 6:00 pm Exhibits and Happy Hour

Saturday, October 10

8:00 am – 2:00 pm Exhibits

Minimum Continuing Legal Education (MCLE)

The State Bar of California and the Office of Section Education and Meeting Services are State Bar of California MCLE approved providers. Programs at the Annual Meeting give continuing legal education credit in all required areas, and most areas of legal specialization. Courses in MCLE sub-fields are subject to change.

Legal Ethics: 3, 5, 7, 9, 10, 14, 17, 27, 28, 31, 32, 33, 39, 45, 48, 50, 62, 63, 64, 65, 70, 72, 84, 85, 89, 91, 92, 100, 107, 109, 110, 112

Competence Issues: 8, 20, 67, 119

Elimination of Bias in the Legal Profession: 2, 29, 43, 49, 77, 83, 93, 115

Courses Offering Legal Specialization Credit:

Appellate Law: 5, 30, 36, 60, 71, 104, 120

Bankruptcy Law: 23, 33, 36, 81

Criminal Law: 9, 16, 29, 50, 59, 65, 78, 94, 105, 115, 120, 122, 125

Estate Planning, Trust and Probate Law: 24, 34, 45, 56, 101, 108

Family Law: 13, 30, 51, 95, 105, 117, 125, 126

Franchise and Distribution Law: 47

Immigration and Nationality Law: 42, 52

Legal Malpractice Law: 4, 6, 7, 10, 11, 14, 17, 22, 25, 26, 27, 28, 32, 33, 39, 45, 48, 50, 55, 62, 63, 64, 72, 85, 87, 92, 107, 109, 112, 114

Taxation Law: 23, 55, 79, 101, 126

Workers' Compensation Law: 35, 46, 57

MCLE Program Materials: Education program materials will be provided to all attendees in electronic format only. Materials will be available online before the Annual Meeting. A link will be sent to all pre-registrants before the meeting.

Child Care: Individual arrangements for child care may be made by contacting the concierge at the Anaheim Marriott or Sheraton Park Hotel.

Conference of California Bar Associations (CCBA): The Conference of California Bar Associations (CCBA) will hold its annual **Conference of Delegates** at the Sheraton Park Hotel, from October 9-11, 2015. Delegates must register directly with the Conference of California Bar Associations. Information on CCBA registration is at www.calconference.org. The State Bar Annual Meeting is a separate event with a separate registration process and fee. Delegates who also wish to attend the State Bar Annual Meeting may register with the form included in this Preview or online at www.calbar.ca.gov/annualmeeting. A State Bar Annual Meeting name badge will be required for admission to all Annual Meeting education programs. State Bar Annual Meeting registration also will be required to purchase tickets to certain Annual Meeting events. Delegates are welcome to visit the Annual Meeting Exhibit Hall, but must stop by the State Bar registration desk to pick up an exhibit hall pass.

Registration Assistance: Please call 415-538-2508

Special Assistance: Please call 415-538-2210 or email AnnualMeeting@calbar.ca.gov

Pre-Registration/ Event Fee FORM

Early-bird Registration Deadline: September 14, 2015
Pre-Registration Deadline: September 21, 2015

Use the Course Selector for your education course selections.
For registration assistance call: 415-538-2508.
For special assistance call: 415-538-2210 or e-mail AnnualMeeting@calbar.ca.gov
Keep a copy for your records.

HOW TO REGISTER

Complete steps 1-3 and file pre-registration/event fee form online, fax, or mail.

Online: www.calbar.ca.gov/annualmeeting

Fax: Send Pre-Registration Form and Course Selector to:
415-538-2368.

If sending by fax, do not mail original form. Faxed registrations must include credit card payment. Confirm of receipt of faxed registrations cannot be confirmed by telephone.

Mail: Send Pre-Registration Form and Course Selector to:
2015 Annual Meeting Pre-Registration
The State Bar of California
180 Howard Street
San Francisco, CA 94105-1639

STEP ONE

Bar #
First & Last Name
Firm
Address
City, State, Zip
Phone
Email (required for email confirmaiton)

☐ Check here if you do not want your name and address disclosed to other 2015 Annual meeting attendees, exhibitors/vendors

Your response to the following questions will aid us in planning the Annual Meeting.

Primary Practice Area: _____

Firm/Practice Size: ☐ 1-5 attys ☐ 6-50 attys ☐ 51+ attys

Complimentary to Annual Meeting Registrants (up to \$95 value). Select one State Bar Section membership (valid August 2 - December 31, 2015). For more information about a State Bar Section visit www.calbar.org/sections

- | | | |
|---|---|--|
| <input type="checkbox"/> Antitrust & Unfair Comp. | <input type="checkbox"/> International Labor & Employment | <input type="checkbox"/> Real Property Solo & Small Firm |
| <input type="checkbox"/> Business Criminal | <input type="checkbox"/> Law Practice/Mgmt & Tech | <input type="checkbox"/> Taxation Trusts and Estates |
| <input type="checkbox"/> Environmental | <input type="checkbox"/> Litigation | <input type="checkbox"/> Workers' Comp. |
| <input type="checkbox"/> Family | <input type="checkbox"/> Public Law | |
| <input type="checkbox"/> Intellectual Property | | |

STEP TWO

REGISTRATION FEES (Select only one from either option A or B)

OPTION A – FULL REGISTRATION PASS

	Through Sept. 14	Sept. 15-21 & Onsite
<input type="checkbox"/> Attorneys licensed before 9/1/10	\$475	\$575
<input type="checkbox"/> Attorneys licensed after 9/1/10	\$355	\$455
<input type="checkbox"/> Other (non-attorney)	\$355	\$455
<input type="checkbox"/> New Admittee (licensed from 12/1/2014–12/1/2015)	\$95	\$95

OPTION B – TWO-DAY REGISTRATION PASS
Education courses and activities on select days.
No other 2-day pass options available.

<input type="checkbox"/> Thursday/Friday Only Pass	\$325	\$425
<input type="checkbox"/> Saturday/Sunday Only Pass	\$325	\$425

Subtotal Registration Fees: \$

EVENT FEES (Event fees will not be accepted without pre-registration fee.)

	# of Tickets	Cost	Total
Thursday, October 8, 2015			
[127] Networking Luncheon	Must RSVP to Attend: <input type="checkbox"/> Yes <input type="checkbox"/> No		
[128] California Women Lawyers Dinner and Silent Auction	@ \$140		\$
Friday, October 9, 2015			
[129] President's Festival—Adult	@ \$45		\$
[130] President's Festival—Child (12 and under)	Complimentary		\$ 0
Saturday, October 10, 2015			
[131] State Bar Breakfast	@ \$35		\$
[132] State Bar Luncheon & Morrison Address	@ \$49		\$

Subtotal Event Fees: \$

Total Registration & Event Fees enclosed/to be charged:

\$

STEP THREE

Make check payable to: The State Bar of California. Paying by credit card? Fax registration form to 415-538-2368

I authorize the State Bar of California to charge my Annual Meeting fees to my MasterCard or VISA account. (No other credit cards accepted)

☐ MasterCard ☐ VISA

Account # _____

Exp. Date _____

Cardholder's Name _____
(print as it appears on card)

Cardholder's Signature _____

2015 State Bar Annual Meeting | October 8–11, 2015

COURSE SELECTOR

Name _____

Bar # _____

Circle the number of the program you wish to attend. Select only ONE in each time slot.

Thursday – October 8	PROGRAM NUMBER
10:00 am – 11:00 am	1
11:15 am – 12:30 pm	2
2:00 pm – 3:30 pm	3 4 5 6 7 8 9 10 11 12 13
4:00 pm – 5:30 pm	14 15 16 17 18 19 20 21 22 23 24
Friday – October 9	PROGRAM NUMBER
8:30 am – 10:00 am	25 26 27 28 29 30 31 32 33 34 35
10:30 am – 12:00 pm	36 37 38 39 40 41 42 43 44 45 46
1:30 pm – 3:00 pm	47 48 49 50 51 52 53 54 55 56 57
3:30 pm – 5:00 pm	58 59 60 61 62 63 64 65 66 67 68
Saturday – October 10	PROGRAM NUMBER
8:30 am – 10:00 am	69 70 71 72 73 74 75 76 77 78 79
10:30 am – 12:00 pm	80 81 82 83 84 85 86 87 88 89 90
2:00 pm – 3:30 pm	91 92 93 94 95 96 97 98 99 100 101
4:00 pm – 5:30 pm	102 103 104 105 106 107 108 109 110 111 112
Sunday – October 11	PROGRAM NUMBER
8:00 am – 9:30 am	113 114 115 116 117 118 119
10:00 am – 11:30 am	120 121 122 123 124 125 126

THE STATE BAR OF CALIFORNIA

180 Howard Street
San Francisco, CA 94105-1639



Annual Meeting education programs, meetings, and events will be held at:

Anaheim Marriott

700 West Convention Way
Anaheim, CA 92802

Anaheim Convention Center

800 West Katella Ave.
Anaheim, CA 92802

Sheraton Park Hotel

1855 South Harbor Blvd.
Anaheim, CA 92802

Registration Deadlines

September 14 Early-bird Pre-Registration & Hotel
Reservation Deadline*

September 21 Pre-Registration Deadline

*Fees increase by \$100 after September 14

REGISTER ONLINE

www.calbar.ca.gov/AnnualMeeting

For the complete Preview and all the education program
descriptions go to www.calbar.ca.gov/AnnualMeeting

PRSRT STD
U.S. Postage
PAID
Documentation



2015 State Bar Annual Meeting Sponsors

Platinum Sponsor



Gold Sponsors



THOMSON REUTERS™

ST. FRANCIS
WINERY & VINEYARDS

Silver Sponsors



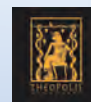
Office of Education



MERCER



Lawyer Assistance Program



Bronze Sponsor

PLI
PRACTISING LAW INSTITUTE®

